



**Cable ID: NETPLA2279 PERMANENT**

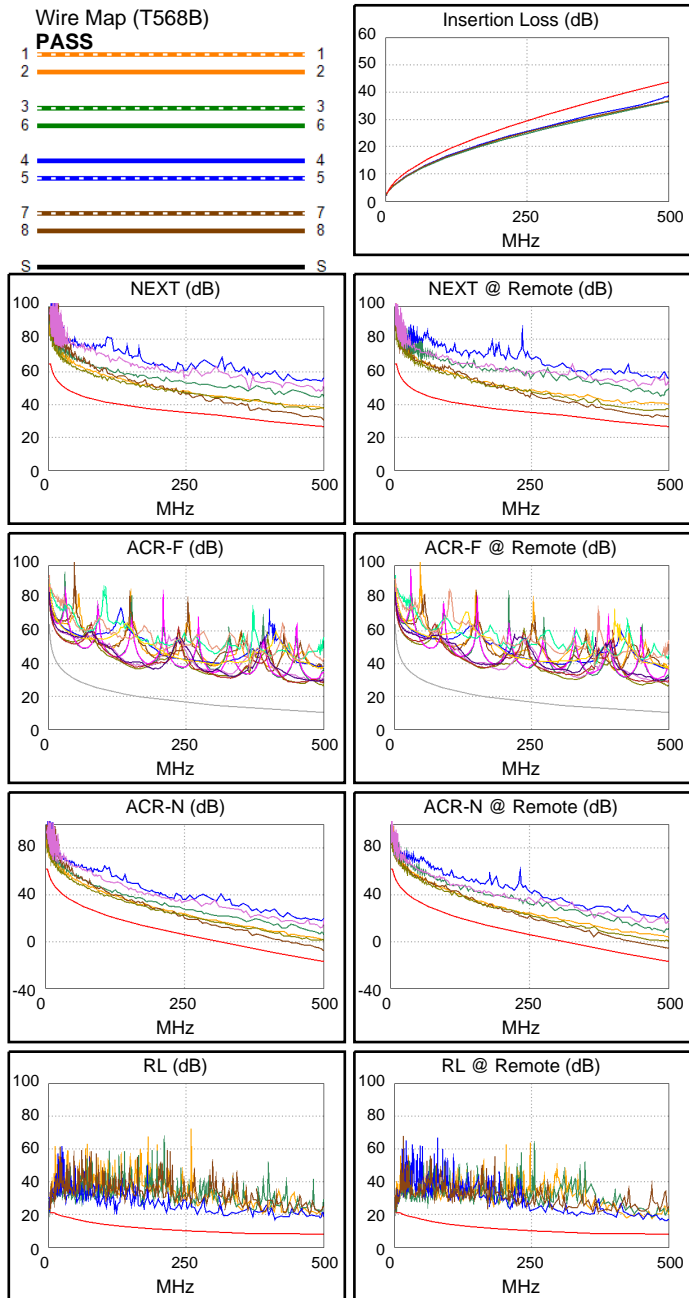
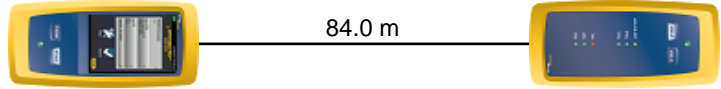
Date / Time: 09/14/2020 02:48:25 PM  
**Headroom 4.2 dB (NEXT 36-45)**  
**Test Limit: TIA Cat 6A Perm. Link**  
 Cable Type: Cat 6A S/FTP  
 NVP: 77.0%

Operator: ASM  
 Software Version: V6.4 Build 4  
 Limits Version: V7.4  
 Calibration Date:  
 Main (Module): 12/10/2019  
 Remote (Module): 12/10/2019

**Test Summary: PASS**

Model: DSX-600  
 Main S/N: 17300443  
 Remote S/N: 17300561  
 Main Adapter: DSX-PLA004  
 Remote Adapter: DSX-PLA004

Length (m), Limit 90.0	[Pair 45]	84.0
Prop. Delay (ns), Limit 498	[Pair 12]	381
Delay Skew (ns), Limit 44	[Pair 12]	17
Resistance (ohms)	[Pair 12]	13.12
Insertion Loss Margin (dB)	[Pair 45]	5.2
Frequency (MHz)	[Pair 45]	500.0
Limit (dB)	[Pair 45]	43.8



**Worst Case Margin Worst Case Value**

<b>PASS</b>	MAIN	SR	MAIN	SR
Worst Pair	36-45	36-45	36-45	36-45
<b>NEXT (dB)</b>	4.2	4.7	4.2	4.8
Freq. (MHz)	499.0	452.0	499.0	471.0
Limit (dB)	26.7	28.1	26.7	27.5
Worst Pair	36	36	36	36
<b>PS NEXT (dB)</b>	5.6	5.8	5.6	5.8
Freq. (MHz)	500.0	471.0	500.0	471.0
Limit (dB)	23.8	24.7	23.8	24.7

<b>PASS</b>	MAIN	SR	MAIN	SR
Worst Pair	36-45	36-45	36-45	36-45
<b>ACR-F (dB)</b>	16.4	15.9	16.5	16.2
Freq. (MHz)	463.0	452.0	499.0	497.0
Limit (dB)	10.9	11.1	10.2	10.3
Worst Pair	36	36	45	45
<b>PS ACR-F (dB)</b>	17.6	17.7	18.1	18.2
Freq. (MHz)	1.6	1.1	484.0	494.0
Limit (dB)	57.0	60.2	7.5	7.3

<b>N/A</b>	MAIN	SR	MAIN	SR
Worst Pair	36-45	36-45	36-45	36-45
<b>ACR-N (dB)</b>	9.2	9.4	9.3	11.2
Freq. (MHz)	367.0	365.0	499.0	500.0
Limit (dB)	-5.5	-5.3	-17.0	-17.1
Worst Pair	45	45	45	45
<b>PS ACR-N (dB)</b>	11.6	12.0	12.0	14.0
Freq. (MHz)	367.0	365.0	499.0	500.0
Limit (dB)	-8.2	-8.0	-19.9	-20.0

<b>PASS</b>	MAIN	SR	MAIN	SR
Worst Pair	36	36	45	45
<b>RL (dB)</b>	2.4	3.8	8.8	8.1
Freq. (MHz)	3.1	3.0	434.0	495.0
Limit (dB)	21.0	21.0	8.0	8.0

Compliant Network Standards:  
 10BASE-T      100BASE-TX      100BASE-T4  
 1000BASE-T    10GBASE-T      ATM-25  
 ATM-51      ATM-155      100VG-AnyLan  
 TR-4      TR-16 Active    TR-16 Passive